



---

**PROUDLY SERVING THE NATIONAL  
CHURCH GOODS ASSOCIATION SINCE 1945.**

---

Custom Manufacturing  
In Bronze, Aluminum & Wrought Iron

Candle and Electronic  
Votive Light Stands

Wrought Iron Appointments

Custom Crosses

Stations of The Cross

DESIGNS BY GRECO

# CANDLE VOTIVE LIGHT STANDS

## Hand Crafted Ecclesiastical Furnishings

### A | VOTIVE STAND COMBINATION SCROLL DESIGN

Item	Hour	Day	W	Price
19X2016	20-15	16-7	28"	\$2,030
19X2824	28-15	24-7	42"	\$2,290
19X4032	36-15	32-7	56"	\$2,890

### B | C | PYRAMID TYPE STAND

Item	Lights	W	H	D	Price
19XP40	40	28"	40"	13.5"	\$1,650
19XP80	80	56"	40"	13.5"	\$1,990

Please Specify Wrought Iron or Tubular base.

### D

Item	Lights	W	H	D	Price
19XP21	21	28"	40"	13.5"	\$1,650
19XP42	42	56"	40"	13.5"	\$1,990

Please Specify Wrought Iron or Tubular base.

### E | VOTIVE STAND WITH HUSKS

Item	Lights	W	H	D	Price
19X25H	25	14"	38"	13.5"	\$1,190
19X50H	50	28"	38"	13.5"	\$1,490
19X75H	75	42"	38"	13.5"	\$1,790
19X100H	100	56"	38"	13.5"	\$2,150

### F | VOTIVE STAND

Item	Lights	W	H	D	Price
19X90	40	36"	40"	16"	\$1,760

### G | 19X62 DEVOTIONAL LIGHTS

(packed 12 per box) | \$220 box

H | Large Prong for globes

I | Small Prong for glass & inserts

J | 8 Leaf Husk for glass & inserts

K | 4 Leaf Husk for glass 3,5,7 day & inserts

L | Small Husk for votive glass 10, 15, 24 hr.

M | Small Cup for votive glass 10, 15, 24 hr.



Glasses shown on this page are not included with stands.

At your request, devotional Votive Stands can be designed and engineered to fit any area in your church.

PEP Industries' craftsmen and trained staff will coordinate your special needs.



**A | NEW! 19X60**

28"W x 40"H x 17"D  
Shown with 19X36R Corner Pieces  
and optional modern Chi-Rho symbol.  
Sold without glass.  
\$1,465

**B | NEW! 19X36R CORNER PIECE**

17" Radius x 40"H x 17"D  
Shown with optional modern  
Chi-Rho Symbol.  
Sold without glass.  
\$1,240 (Each)

**22X18 MODERN CHI-RHO SYMBOL**

7.5"W x 16"H  
\$365 (Each)

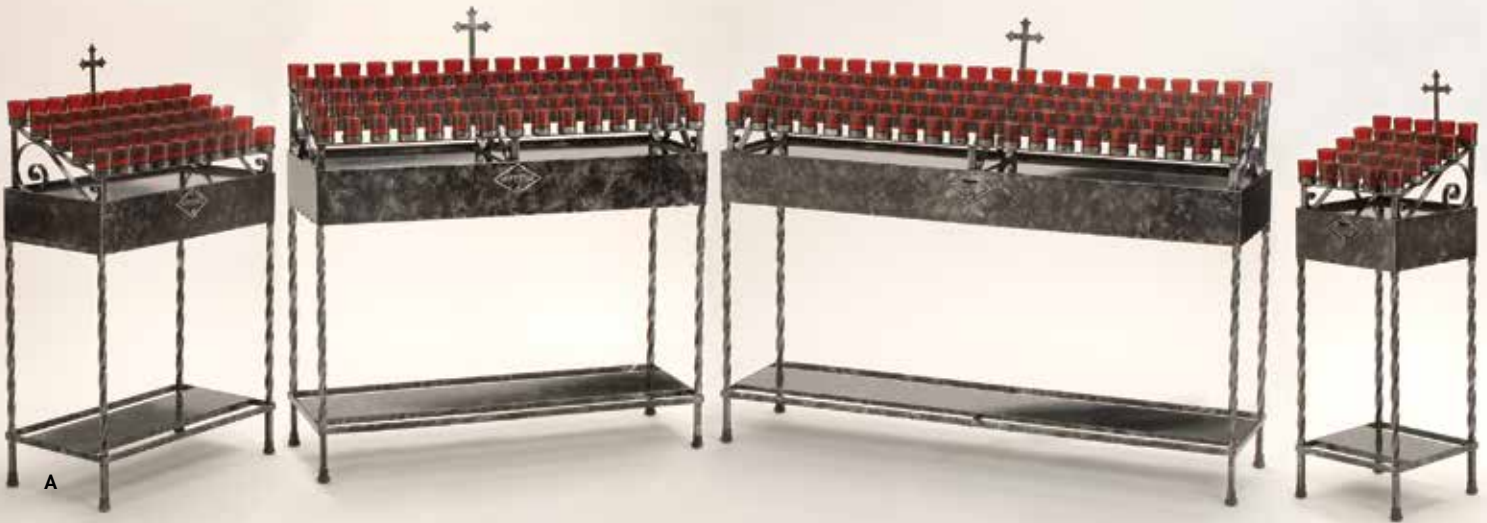


# CANDLE VOTIVE LIGHT STANDS

Hand Crafted Ecclesiastical Furnishings

## A | VOTIVE LIGHT STAND WROUGHT IRON

Item	Lights	W	H	D	Price
19X25	25	14"	38"	13.5"	\$1,190
19X50	50	28"	38"	13.5"	\$1,490
19X75	75	42"	38"	13.5"	\$1,780
19X100	100	56"	38"	13.5"	\$2,150



A



B



C



D

## B | 19X01 VOTIVE LIGHT STAND

Wrought Iron. Back row has 6 large lights and four rows of 10 small lights.  
 28"W x 38"H x 13.5"D \$1,530  
 42"W: 9 large lights \$1,840  
 60 small lights  
 56"W: 12 large lights \$2,210  
 80 small lights

## C | 19X37 VOTIVE LIGHT STAND

Wrought Iron. 7 Day Lights. 24 lights regular glass/20 lights for globes.  
 28"W x 38"H x 13.5"D \$1,590  
 42"W: 36 large lights \$1,960  
 56"W: 48 large lights \$2,300

## D | 19X92 VOTIVE STAND

24 Large Lights. With Utility Shelf.  
 32"W x 38"H x 13.5"D \$1,850

Glasses shown on this page are not included with stands. At your request, devotional Votive Stands can be designed and engineered to fit any area in your church. PEP Industries' craftsmen and trained staff will coordinate your special needs.

# CANDLE VOTIVE LIGHT STANDS

Hand Crafted Ecclesiastical Furnishings



## A | LEAF TYPE STAND — 28"W x 17"D

Item	Lights	H	Leaf	Prong
19x05	5	35"	\$1,140	\$1,190
19x10	10	35"	\$1,170	\$1,210
19x15	15	38"	\$1,240	\$1,390

## B | 19X49 OPEN TOP STAND

Tubular base with pan  
40"W x 40"H x 14"D \$1,570

## C | 19X82 CHI-RHO DESIGN

Holds 42 small & 14 large lights with pan  
40"W x 40"H x 17"D \$2,270

## D | 19X56R RADIUS VOTIVE STAND

34"W x 38"H x 17"D \$2,650

### 19X70 | 8-LIGHT SCONCE

16"W x 26"H x 4"D \$990 each

## E | 19X35R RADIUS VOTIVE STAND

34"W x 40"H x 17"D \$2,650

**Also Available:** Casters \$310

## OFFERING BOXES

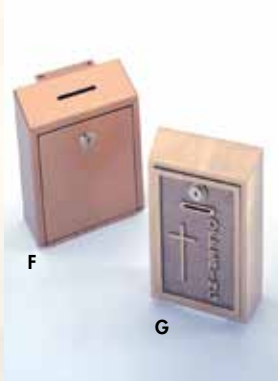
Item	W	H	D	Stand	Wall
F   14X08	6"	9"	3.75"	\$295	\$295
G   14X01A	6"	7"	2.5"	\$750	\$750
G   14X01B	6"	7"	2.5"	\$1,270	\$1,270
H   14X10	10"	36"	6"	\$880	\$880
I   14X12	10.25"	12.5"	4"	N/A	\$810

## J | 19X03 SANDBOX (SAND INCLUDED)

5"W x 3.5"H x 2"D \$210

## K | 19X02 TAPER BOX (TAPERS INCLUDED)

3"W x 9.5"H x 2.25"D \$210



Glasses shown on this page are not included with stands.

## WROUGHT IRON APPOINTMENTS

Hand Crafted Ecclesiastical Furnishings

- A | 5X75 FLOOR STAND & ADVENT WREATH**  
24"W x 54"H \$1,620
- B | 7X40 FLOOR SANCTUARY LAMP**  
49"H \$1,010
- C | 6X30 CANDLESTICK**  
42"H x 1.5" Socket \$760
- D | 5X50 FLOOR CANDELABRA**  
57"H x 7/8" Socket \$1,340
- E | 2X130 PASCAL**  
44"H x 2.5" Socket \$1,100
- F | 4X10 STANDING PROCESSIONAL CROSS**  
78"H \$2,270
- G | 13X70 LECTERN**  
Solid oak top, wrought iron base  
20"W x 45"H x 23"D \$2,390
- H | 21X30 SINGLE PRIE DIEU**  
Padded kneeler and armrest,  
wrought iron base  
22"W x 34"H x 20"D \$1,255  
**21X32 DOUBLE PRIE DIEU** (Not Pictured)  
40"W x 34"H x 20"D \$2,170
- I | 25X30 CRESCENCE TABLE**  
Solid oak top, wrought iron base  
28"W x 30"H x 17"D \$1,450
- J | 7X115W HANGING SANCTUARY LAMP**  
16" x 3" x 12" back wall plate  
13" x 14" lamp, 22" chain \$815
- K | 7X130W WALL SANCTUARY LAMP**  
16" x 3" x 12" \$585



Finishes pictured in Black, and Black & Silver Speckle. Custom finishing can be fabricated to your specifications. Glasses and candles shown on this page are not included with stands.



# PREMIER CANDLE STANDS

Hand Crafted  
Ecclesiastical Furnishings



A

## A | 19X110 VOTIVE LIGHT STAND

72"W x 46"H x 29"D \$12,500  
110 Lights  
15" Square Opening for Statue  
Shown with 48" Statue (not included)

## B | CUSTOM CANDLE STAND

Item	Lights	W	H	D	Price
19X51	50	43"	39"	20"	\$5,380
19X51A	Combination Top				\$5,880
(3 rows=30 large/2 rows=30 small)					

## C | CUSTOM CANDLE STAND

Item	Lights	W	H	D	Price
19X94	24	39"	43"	20"	\$2,650

## D | 8X15 TENEBRAE 15 LIGHT CANDELABRA

7/8"H Candle Sockets  
41"W x 75"H \$3,515



D



B



C

BRONZE

GOLD

BLACK &  
SILVER  
BRUSHED

ANTIQUE

BLACK

BLACK &  
GOLD  
BRUSHED

BLACK &  
SILVER  
SPECKLE

COPPER  
REPOUSSE

SILVER  
REPOUSSE

# FINISHES



## OAK CABINET CANDLE STANDS

Hand Crafted Ecclesiastical Furnishings

- A | 19X784CAB**  
49"H x 95"W x 38"D | 84 Candles  
16" square area for statue      \$16,700
- B | 19X740CAB**  
40"H x 43"W x 20"D  
40 Candles      \$6,750
- C | 19X750CAB**  
43"H x 43"W x 23"D  
50 Candles      \$7,000
- D | 19X7120CAB**  
43"H x 107"W x 24"D  
120 Candles      \$16,300
- E | 19X7104CAB**  
43"H x 107"W x 24"D | 104 Candle  
16" square area for statue      \$16,300
- F | 19X736CAB**  
49"H x 54"W x 28"D  
36 Candles      \$7,200
- G | 19X40CAB**  
39"H x 31"W x 16"D  
40 Votives      \$5,500

Solid Brass Crosses are sold separately  
in sets of 5 for \$775.00 per set.



A



B



C



D



E



F



G



# OAK TABLE CANDLE STANDS

Hand Crafted Ecclesiastical Furnishings



A

**A | 19X784TB**

49"H x 95"W x 38"D | 84 Candles  
16" square area for statue \$13,800

**B | 19X40TB**

39"H x 31"W x 16"D  
40 Votives \$4,830

**C | 19X7120TB**

45"H x 107"W x 24"D  
120 Candles \$13,850

**D | 19X750TB**

43"H x 43"W x 23"D  
50 Candles \$6,700

**E | 19X740TB**

40"H x 43"W x 20"D  
40 Candles \$6,500

**F | 19X736TB**

49"H x 55"W x 29"D  
36 Candles \$6,640

**G | 19X7104TB**

43"H x 107"W x 24"D | 104 Candles  
16" square area for statue \$13,850



B



C



D



E



F



G

Glasses and statues shown on this page are not included with stands. Shown in honey oak finish. At your request, devotional Votive Stands can be designed and engineered to fit any area in your church.

## STATIONS

### Hand Crafted Ecclesiastical Furnishings

#### A | 20X00 ALL METAL STATION

Full figures. Cast in bronze or aluminum.  
Suitable for interior or exterior.  
Approx. 28" high.

Bronze	\$39,250
Aluminum	\$23,000

#### B | 20X06 METAL STATION

11" figures. Cast in bronze or aluminum.  
Overall size approx. 7" x 12". Background  
additional upon request of material.

Bronze	\$11,250
Aluminum	\$8,500

#### C | 20X16 PLAQUE STATION

Cast in bronze or aluminum.  
Can be wood mounted. Approx. 9" x 10"

Bronze	\$14,550
Aluminum	\$9,275

#### D | 20X16 15TH STATION

Cast in bronze or aluminum.  
Can be wood mounted. Approx. 9" x 10"

Bronze	\$1,150
Aluminum	\$725



C



D

15TH STATION

B





# BRONZE APPOINTMENTS

Hand Crafted Ecclesiastical Furnishings



**A | 6X85FP PROCESSIONAL CANDLESTICK**  
Removable at Mid Point Base 12"  
46"H to Bobeche, 1.5" Socket \$2,975

**B | 6X80F CANDLESTICKS**  
Base 12", 49"H to Bobeche  
1.5" Socket \$2,750

**C | 5X80F FLOOR CANDELABRA**  
Base 12", 56"H x 19"W  
7/8" Socket \$3,135

**D | 2X12 LOW PROFILE PASCHAL CANDLESTICK**  
Base 12", 28"H to Bobeche  
3" Socket \$2,825

**E | 7X80F FLOOR SANCTUARY LAMP**  
Base 12", 44"H to Bobeche \$3,280

**F | 16X90 FLOOR CENSOR STAND**  
53"H, Base 10" \$2,125

**G | 4X175F PROCESSIONAL CROSS**  
Removable at Mid Point  
Overall Height 93" \$3,400

**H | 7X180W SANCTUARY LAMP**  
Back Plate 21" x 3.5"  
Projection 11" \$2,780

**I | 10X70 MISSAL STAND ADJUSTABLE TOP**  
15"W x 12"D \$2,075

**J | 6X80A ALTAR CANDLESTICKS**  
Base 7.5", 18"H to Bobeche, 1.5" Socket  
Other Sizes Available \$2,250

**K | 5X80A ALTAR CANDELABRA**  
Base 7.5" H 14.5" to Bobeche,  
7/8" Socket \$2,250

**L | 4X45A ALTAR CROSS W/CORPUS**  
Base 7.5", 38"H \$1,960



H



L



I



J



K





# ELECTRIC & ELECTRONIC VOTIVE LIGHT STANDS

## Hand Crafted Ecclesiastical Furnishings

### 740 SERIES

Item	Lights	W	H	D	Price
A. 19XE740W	40	41"	48"	17"	\$6,060
A. 19XEL740W	40	41"	48"	17"	\$7,470

Item	Lights	W	H	D	Price
B. 19XE740T	40	40"	48"	17"	\$5,900
B. 19XEL740T	40	40"	48"	17"	\$7,295

### D | TUBULAR BASE WITH CROSS INSERT

Item	Lights	W	H	D	Price
19XE540T	40	40"	48"	17"	\$6,300
19XEL540T	40	40"	48"	17"	\$7,660

### E |

Item	Lights	W	H	D	Price
19XE401	40	31"	43"	16"	\$7,890
19XEL401	40	31"	43"	16"	\$9,120

### F |

Item	Lights	W	H	D	Price
19XE7401	40	43"	48"	20"	\$8,050
19XEL7401	40	43"	48"	20"	\$9,546

### CORNER SERIES

Item	Lights	W	H	D	Price
G. 19XE736C	36	50"	57"	25"	\$5,400
G. 19XEL736C	36	50"	57"	25"	\$8,600

Item	Lights	W	H	D	Price
H. 19XE49C	49	46"	49"	23"	\$7,350
H. 19XEL49C	49	46"	49"	23"	\$9,080

- C | ROMAN INSERT \$590 additional
- G | GOTHIC INSERT \$590 additional
- H | CHI-RHO INSERT \$590 additional



A  
Wrought Iron Base



B



C



D



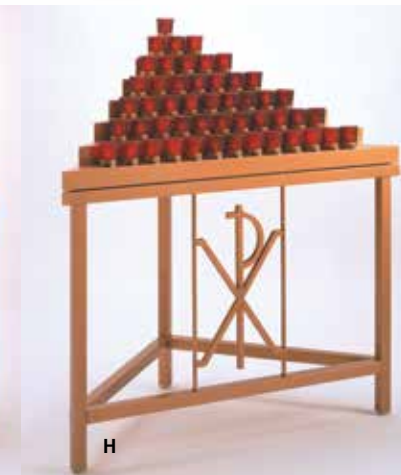
E



F



G



H

# ELECTRIC & ELECTRONIC VOTIVE LIGHT STANDS

Hand Crafted Ecclesiastical Furnishings



A



B



C



D  
Free Standing  
Floor Mount

Top View

A. Aluminum  
B. Solid Bronze

E

F

G

H

## A | THREE ROWS SMALL LIGHTS ONE ROW LARGE

Tubular base

Item	Lights	W	H	D	Price
19XE30T	37	28"	47"	13"	\$5,900
19XEL30T	37	28"	47"	13"	\$7,275

## 40 SERIES

Item	Lights	W	H	D	Price
B. 19XE40T	40	28"	43"	13"	\$5,900
B. 19XEL40T	40	28"	43"	13"	\$7,295
C. 19XE40W	40	28"	43"	13"	\$6,060
C. 19XEL40W40	28"	43"	13"	\$7,470	

## OFFERING BOXES

Item	W	H	D	Stand	Wall
D. 14X10	10"	36"	6"	\$680	Floor Mount
E. 14X08	6"	9"	3.75"	\$260	\$260
F. 14X01A	6"	7"	2.5"	\$585	\$585
F. 14X01B	6"	7"	2.5"	\$950	\$950

## G | 19XE212 6 DAY GLASS

Gold Finish, 9.5"H

\$170

## H | 19XE215 24 HR GLASS

Gold Finish, 4.5"H

\$145

## I | ELECTRIC | ELECTRONIC

Opening for statue base is 17" x 17"  
Statue not included

Item	Lights	W	H	D	Price
19XE784	84	88"	57"	36"	\$13,250
19XEL784	84	88"	57"	36"	\$16,250

## I | CANDLE STAND

Item	Lights	W	H	D	Price
19X784	84	88"	57"	36"	\$7,550



I

(E) denotes electric, (EL) denotes electronic (5 day, 8 hour, or 2 hour timers available).  
All components meet national electric codes and UL safety requirements.  
The flicker flame candle bulb is used to simulate candlelight, eliminating open flames.



## OAK CABINET ELECTRONIC STANDS

Hand Crafted Ecclesiastical Furnishings

- A | 19XE784CAB** \$22,110
- A | 19XEL784CAB** \$28,000  
57"H x 95"W x 38"D | 84 Lights  
16" square area for statue
  
- B | 19XE740CAB** \$10,315
- B | 19XEL740CAB** \$11,700  
48"H x 43"W x 20"D | 40 Lights
  
- C | 19XE7120CAB** \$27,560
- C | 19XEL7120CAB** \$31,760  
51"H x 107"W x 24"D | 120 Lights
  
- D | 19XE750CAB** \$12,000
- D | 19XEL750CAB** \$13,750  
51"H x 43"W x 24"D | 50 Lights
  
- E | 19XE7104CAB** \$27,560
- E | 19XEL7104CAB** \$31,760  
51"H x 102"W x 24"D | 104 Lights  
16" square area for statue
  
- F | 19XE736CAB** \$9,950
- F | 19XEL736CAB** \$11,950  
57"H x 53"W x 28"D | 50 Lights
  
- G | 19XE40CAB** \$10,316
- G | 19XEL40CAB** \$11,700  
43"H x 31"W x 16"D | 40 Lights

Solid Brass Crosses are sold separately in sets of 5 for \$775.00 per set.



A



B



C



D



E



F



G



# OAK CABINET ELECTRONIC STANDS

Hand Crafted Ecclesiastical Furnishings



A



B



C



D



E



F

- |                                  |          |
|----------------------------------|----------|
| <b>A   19XE784TB</b>             | \$18,920 |
| <b>A   419XEL784TB</b>           | \$24,850 |
| 57"H x 95"W x 38"D   84 Lights   |          |
| 16" square area for statue       |          |
| <b>B   19XE7120TB</b>            | \$24,050 |
| <b>B   19XEL7120TB</b>           | \$28,180 |
| 51"H x 107"W x 24"D   120 Lights |          |
| <b>C   19XE750TB</b>             | \$11,420 |
| <b>C   19XEL750TB</b>            | \$13,200 |
| 51"H x 43"W x 24"D   50 Lights   |          |
| <b>D   19XE736TB</b>             | \$10,100 |
| <b>D   19XEL736TB</b>            | \$11,500 |
| 57"H x 53"W x 28"D   36 Lights   |          |
| <b>E   19XE40TB</b>              | \$9,300  |
| <b>E   19XEL40TB</b>             | \$10,650 |
| 43"H x 31"W x 16"D   40 Lights   |          |
| <b>F   19XE7104TB</b>            | \$24,050 |
| <b>F   19XEL7104TB</b>           | \$28,180 |
| 51"H x 107"W x 24"D   104 Lights |          |
| 16" square area for statue       |          |

- |                                  |          |
|----------------------------------|----------|
| <b>19XE740TB</b>                 | \$9,300  |
| <b>19XEL740TB (NOT PICTURED)</b> | \$10,650 |
| 48"H x 43"W x 20"D   40 Lights   |          |

At your request, devotional Votive Stands can be designed and engineered to fit any area in your church. PEP Industries' craftsmen and trained staff will coordinate your special needs.

(E) denotes electric, (EL) denotes electronic (5 day, 8 hour, or 2 hour timers available).

All components meet national electric codes and UL safety requirements. The flicker flame candle bulb is used to simulate candle light, eliminating open flames. Shown in antique cherry finish.

## CUSTOM CROSSES

Fabricated to compliment interior or exterior settings



### CUSTOM MADE ALUMINUM CROSSES\*

Overall Height	A 2"	B 4"	A 2"	B 6"	A 3"	B 3"	A 4"	B 4"
4'	\$2,630	\$2,740	\$2,630	\$2,740	\$2,630	\$2,740	\$2,630	\$2,740
6'	\$3,245	\$3,490	\$3,245	\$3,490	\$3,245	\$3,490	\$3,245	\$3,490
8'	\$3,675	\$4,290	\$3,675	\$4,290	\$3,675	\$4,290	\$3,675	\$4,290
10'	\$4,210	\$4,865	\$4,210	\$4,865	\$4,210	\$4,865	\$4,210	\$4,865

Crosses can be fabricated to specifications in wood or metal for everlasting beauty.

Handtooled in every detail and finish with epoxy coating. Every unit can be designed in traditional or contemporary styles to meet your architectural expression.

\*Bracketing prices not included

# REFINISHING

Hand Crafted Ecclesiastical Furnishings



BEFORE



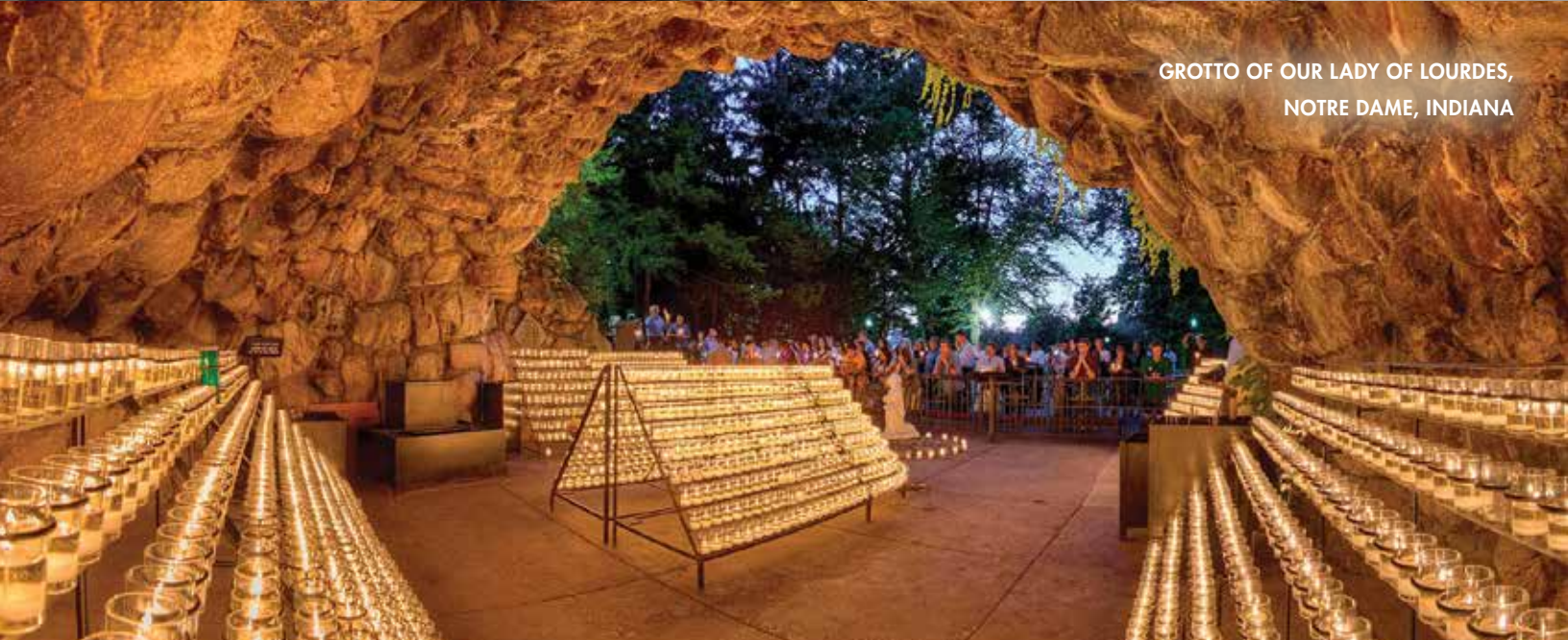
AFTER



Refinishing and restoration of existing metal church appointments.



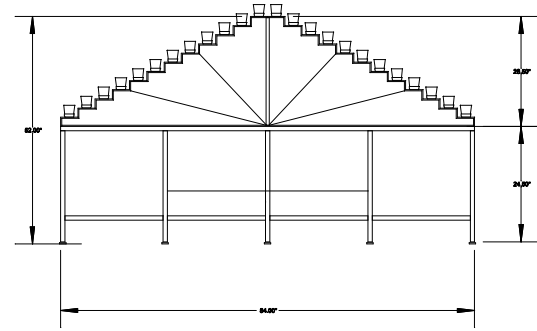
**WE CAN HELP CREATE  
DEVOTIONAL AREAS.**



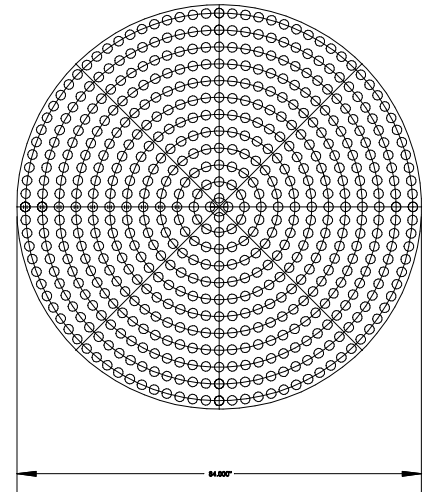
GROTTO OF OUR LADY OF LOURDES,  
NOTRE DAME, INDIANA

**CUSTOM DESIGNS**





**CIRCLE CANDLE STAND  
10 ROWS OF 576 LIGHTS**



# CUSTOM DESIGNS



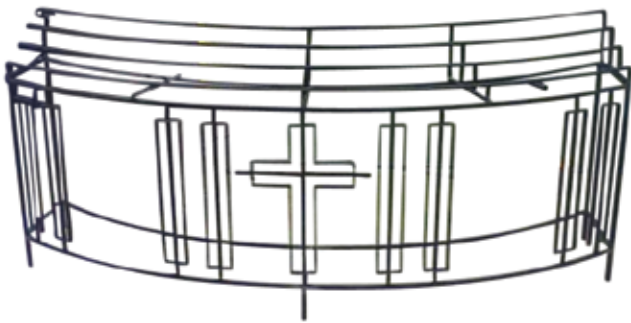
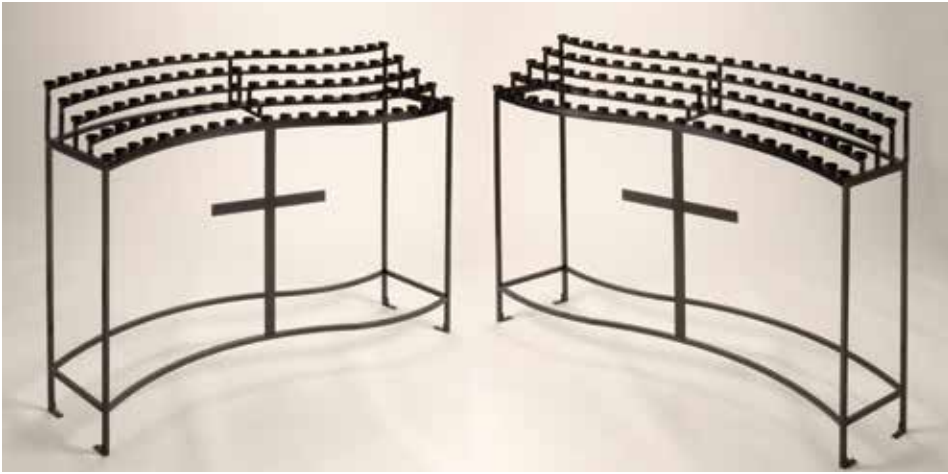
26"



6 ft.

Product Images not shown to scale



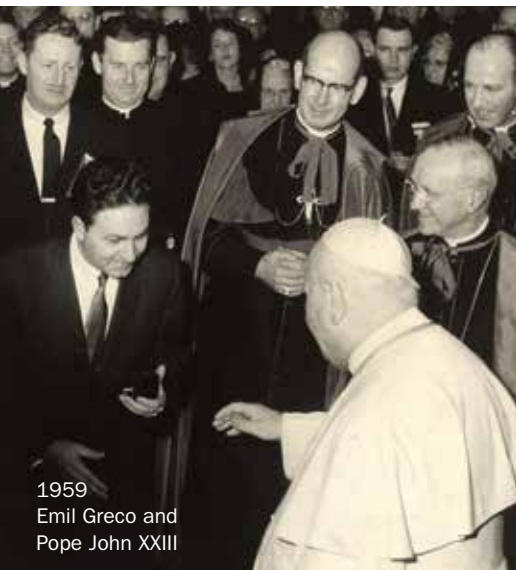


**SYMBOLS | PLAQUES | MID CENTURY ART**

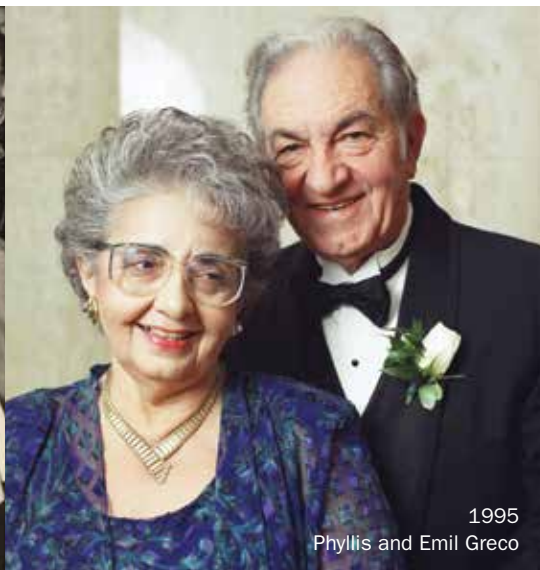


**CUSTOM DESIGNS**

# HISTORY



1959  
Emil Greco and  
Pope John XXIII



1995  
Phyllis and Emil Greco



1959  
Emil and Phyllis Greco and Cardinal Meyer

**GRECO MFG. CO. — PEP INDUSTRIES,** a fabricator of modern metal ecclesiastical designs and furnishings, began as a vision of Emil Greco. Since its inception in 1945, the family business has evolved to the current industry standard it is today.

Emil Greco, the founder and visionary responsible for the business, was born in 1920 in Merano Marchesato, a small Calabrian town in the Province of Cosenza, Italy. After World War I, unemployment, lack of health care, and a poor educational system forced many area residents to look for work elsewhere, often abroad. Nine-year old Emil and his mother were among those heading across the Atlantic on the Conte Biancamano, passing through Ellis Island, and settling in Chicago.

Emil flourished in Chicago, indulging in his artistic interests, and eventually attending courses at the Art Institute of Chicago and the Fine Arts Academy. He cultivated his passion for art with love and commitment, and that passion set the course for the remainder of his life. With the outbreak of World War II, Emil was chosen for training in the Military Intelligence Department and joined the Twenty-Ninth Infantry Division for the landing on Omaha Beach in France on D-Day.

On his return from war in 1945, Emil helped his family sell miniature model airplane parts at their hobby store. He fell in love with Phyllis Savaglio and they married in 1950. For Emil, Phyllis would be not only a loving companion for life, but also an irreplaceable partner in his unique endeavors, a valued collaborator, and a constant stimulus for his creative energy. She helped him develop the business known as GRECO MFG. CO.

With his fabricating vision, Emil began to design unique communion railings of marble, bronze, and other metals for Catholic churches, a tremendous area of opportunity. He prospered and soon was able construct a 10,000 square foot factory. Emil and GRECO soon became known for innovative ecclesiastical interior design, focusing on metal and wood interior furnishings during the mid 1960s.



With the Vatican Council II convening during that same time period, new directions in liturgical theology and furnishings were introduced. With their reputation for excellence, Emil and his company were appointed by the Liturgical Commission of the United States to teach architects working in this sector how to apply the new requirements contained in liturgical reform.

Emil became friends with many figures holding high ecclesiastical office, first among them Pope John XXIII, who bestowed on him the nickname “the Calabrian friend of His Holiness.” During frequent trips to Italy, Emil never failed to bring gifts for the Vatican prelates, coining medals for them: a gold one for the Pope and bronze ones for bishops and cardinals.

Over time, Emil’s company designed, fabricated, and installed interiors of hundreds of churches, including St. Peter’s in the heart of Chicago; the Cathedral in Phoenix, Arizona; St. Mary’s in the mountains of California; and others from Miami Beach to San Francisco to New York. While remaining within the framework of an ancient art, GRECO brought about changes in style, wisely fusing contemporary ideas with tradition. The factory grew to 130,000 square feet and employed up to 95 collaborators, including architects, sculptors, artists, woodworkers, glaziers, and many others.

From the 1970s until today, the wax candle stand and shrine have been GRECO’s most famous products, with GRECO introducing the first UL-approved electric candle votive stands and distributing its new articles throughout the United States and Canada. Progress in metal technology permitted GRECO MFG. CO. to create exclusive and original contemporary furnishings using bronze and stainless steel, as well as burnt bronze technique, molds using polyurethane, and Verson press fabrication by oil pressure technique.

Never content to stay only with ecclesiastical furnishings, Emil and Phyllis branched out into other areas, distributing Beringer Brothers alter wine; starting their own bank; owning a semi-professional hockey franchise; and purchasing and developing hundreds of acres of real estate, including a mountain and gold mine in Montana. One of their greatest accomplishments was the design and construction of a sports complex to keep “kids off the street.” As it’s known today, THE ODEUM SPORTS AND EXPO CENTER hosts a variety of special events including concerts, indoor soccer, corporate events, and public tradeshows. Each year, over two million visitors pass through THE ODEUM doors.

GRECO MFG. evolved into PEP INDUSTRIES in the early 1980s and today flourishes with the continued courses that Emil and Phyllis established. PEP Industries is now spearheaded by Bruce Campbell (son-in-law) since 1992. He continues the quality of excellence in customer satisfaction, and the business values of Emil and Phyllis Greco. PEP today is a diversified, state-of-the-art metal fabricating facility. PEP-GRECO continues to produce special, “one of a kind” products. Designs by GRECO will live on through PEP INDUSTRIES for many years to come!

Emil and Phyllis together built their success with commitment and dedication, giving a valuable lesson in life to us all, especially their four children, Patrick, Francine, Philip, and Renee. Emil Greco left us in 1996, husband, father, and best friend: a man who taught all of us the true meaning of love, family, friendship, and life.







725 N. Wisconsin | Villa Park, IL 60181  
630.833.0404 | Fax 630.833.7709 | [pepindustries.com](http://pepindustries.com)  
2024-2025



DESIGNS BY GRECO