

Abbey

2021 Product Catalog



Altar Server Albs and Accessories



Style 225
Style 226

Front Wrap Albs

Style 225

Medium weight 100% Polyester with velcro closure and velcro waist strips. The collar is shaped for comfort and style.

Sizes 7 through 10	\$ 95.00 ea.
Sizes 11 through 13	103.00 ea.
Sizes 14 through 16	115.00 ea.
Sizes 17 through 20	120.00 ea.

Refer to size chart.

Style 226 Same style as 225. Light weight 65% Polyester and 35% cotton with velcro closure and velcro waist strips. The collar is shaped for comfort and style.

Sizes 7 through 10	\$100.00
Sizes 11 through 13	108.00
Sizes 14 through 16	120.00
Sizes 17 through 20	125.00

Refer to size chart.



Style 205



Style 211



Style 207

Flax Alb

Style 210 Same style as 205. Natural flax and polyester blend. Cintures sold separately.

Style 211 Same as 210 without the hood.

Sizes 7 – 10	\$100.00 ea.
Sizes 11 – 13	\$105.00 ea.
Sizes 14 – 16	\$112.00 ea.
Sizes 17 – 20	\$118.00 ea.

Refer to size chart.

Alb Sizes

SIZES 7 — 38"	SIZES 14 — 52"
SIZES 8 — 40"	SIZES 15 — 54"
SIZES 9 — 42"	SIZES 16 — 56"
SIZES 10 — 44"	SIZES 17 — 58"
SIZES 11 — 46"	SIZES 18 — 60"
SIZES 12 — 48"	SIZES 19 — 62"
SIZES 13 — 50"	SIZES 20 — 64"

Measure back length from center neck to bottom hem.

Monastic Albs

Deluxe Alb

Style 207 Medium weight 100% polyester. Cintures sold separately.

Style 208 Same as 207 without the hood.

Sizes 7 – 10	\$73.00 ea.
Sizes 11 – 13	\$80.00 ea.
Sizes 14 – 16	\$83.00 ea.
Sizes 17 – 20	\$87.00 ea.

Refer to size char

Polyester Blend Alb

Style 205 65% polyester and 35% combed cotton blend. Cintures sold separately.

Style 206 Same as 205 without the hood.

Sizes 7 – 10	\$57.00 ea.
Sizes 11 – 13	\$60.00 ea.
Sizes 14 – 16	\$65.00 ea.
Sizes 17 – 20	\$70.00 ea.

Refer to size chart.

Cintures (sold separately)



Style 87

Style 87 81" – Braided cotton cinture with distinctive knot. Black, blue, white, red, natural, purple, gold or green. **\$23.00 ea.**



Style 205C

Style 205C 81" – Rope cinture. Purple, white, green, red, gold or blue. **\$12.00 ea.**



Altar Server and Priest Cassocks

**Surplice
style 115**



**Surplice
style 110**



**Surplice
style 110S**



Altar Server

Roman Cassocks 65% polyester/35% cotton. Red, black, purple or white.

Style 215S (Snap Front)

Style 215U (Button Front)

Sizes 7-10 215S&U **\$60.00 ea.**

Sizes 11-13 215S&U **\$65.00 ea.**

Sizes 14-16 215S&U **\$69.00 ea.**

Sizes 17-20 215S&U **\$72.00 ea.**

Size	Back Lgth.	Size	Back Lgth.
7	38"	14	52"
8	40"	15	54"
9	42"	16	56"
10	44"	17	58"
11	46"	18	60"
12	48"	19	62"
13	50"	20	64"

See full size chart page 10

**Surplices
sold separately
see page 9 for
surplice styles,
sizes and
pricing.**

Button/Snap Kits

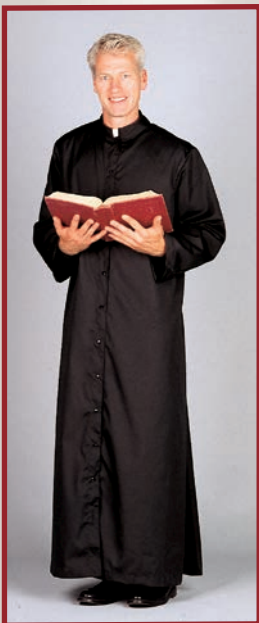
Style #1010 - Snap Kit

Available in black, purple, red, white 10 sets per kit **\$2.50**

Style #2020 - Button Kit

Available in black, purple, red, white 10 buttons per kit **\$2.50**

Adult & Priest



Adult Servers & Priest Cassocks

65% polyester/35% cotton. Red, black, purple or white. Button or snap front.

Style 216S (Snaps) Style 216U (Buttons)

Full Cut – All sizes of 216 \$93.00 ea.

Size	Back Lgth.	Chest	Waist
16x	55"	44"	42"
17x	58"	44"	42"
18x	60"	46"	44"
19x	62"	48"	46"
20x	64"	50"	48"

Style 217S (Snaps) Style 217U (Buttons)

Comfort Cut – All sizes of 217 \$98.00 ea.

Size	Back Lgth.	Chest	Waist
17x	58"	54"	52"
18x	60"	56"	54"
19x	62"	58"	56"
20x	64"	60"	58"

Ladies Cassocks

65% polyester/35% cotton. Red, black, purple or white. Proportionally pleated for a fitted look for women. Button or snap front.

Style 218S (Snaps) Style 218U (Buttons)

Full Cut – All sizes of 218 \$95.00 ea.

Size	Back Lgth.	Chest	Waist
10	55"	36"	34"
12	56"	38"	36"
14	57"	40"	38"
16	58"	42"	40"
18	59"	44"	42"
20	60"	46"	44"

See full size chart page 10.



Front Wrap Albs



Our popular **Style 435 Front Wrap Alb** is shown at left in our new white Herringbone Weave with covered button closures.

Style 423 100% Polyester Abbey Weave – Buttons
Style 424 Same as above – Velcro **\$137.00 ea.**

Style 430 Natural Flax and Polyester Blend – Buttons
Style 431 Same as above – Velcro **\$158.00 ea.**

Style 433 White 65% Polyester/35% Cotton – Buttons
Style 434 Same as above – Velcro **\$128.00 ea.**

Style 435 65% Polyester/35% Cotton – Herringbone Weave
Style 436 Same as above – Velcro **\$150.00 ea.**

Style 437 White 100% Polyester – Buttons
Style 438 Same as above— Velcro **\$150.00 ea.**

Sizing Your Front Wrap Alb

Size	Back Length	Chest/Waist	Sleeve Length	Fit Height
X-Small	54"	30"-40"	31"	5'3"-5'5"
Small	56"	32"-44"	32"	5'6"-5'8"
Medium	58"	34"-48"	33"	5'9"-5'11"
H-Medium	58"	38"-52"	33"	5'9"-5'11"
Large	60"	36"-52"	34"	6'0"-6'3"
H-Large	60"	40"-60"	34"	6'0"-6'3"
X-Large	62"	36"-52"	35"	Over 6'3"

See full size chart page 10.



Tassel Cincture

Style No. 88 4 yards – Rayon
 – Red, White, Purple, Gold, Green, Roman Purple **\$25.00 ea.**

Style No. 84 4 yards – Cotton – Washable Cotton, in White only. **\$25.00 ea.**



Monk's Knot Cincture

Style No. 85 4 yards – 100% Braided Cotton – Black, Red, Gold, White, Purple, Natural and Green. **\$25.00 ea.**



Front Wrap Albs with Lace Inserts

Our **Style 435/I Front Wrap Alb with Lace inserts** is shown at right in our pearl white, linen-look poly/rayon blend with covered button closures.

Style 423/I 100% Polyester Abbey Weave
– Buttons with Lace Insert

Style 424/I 100% Polyester Abbey Weave
– Velcro with Lace Insert **\$208.00 ea.**

Style 433/I White 65% Polyester/35% Cotton
– Buttons with Lace Insert

Style 434/I White 65% Polyester/35% Cotton
– Velcro with Lace Insert **\$198.00 ea.**

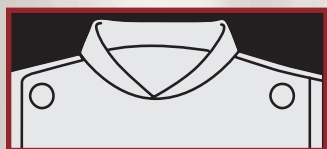
Style 435/I 65% Polyester/35% Cotton –
Herringbone Weave
– Buttons with Lace Insert

Style 436/I 65% Polyester/35% Cotton –
Herringbone Weave
– Velcro with Lace Insert **\$222.00 ea.**

Style 437/I White 100% Polyester
– Buttons with Lace Insert

Style 438/I White 100% Polyester
– Velcro with Lace Insert **\$222.00 ea.**

Style 436/I



Button Closure



Velcro Closure

All Garments with Lace Inserts are Made to Order
Non-Returnable/Non-Refundable
Allow 2 weeks to produce and ship



Lace Insert

Liturgical Orphreys



Garment style 55 with Banding
style 1878 – No.55-1878



Banding Style 1878

Multicolor Cross, Wheat and Grapes Design—
Antique gold, green and red. Not available on sleeve.

Sizes: x-small, small, medium, large and x-large.

Available on styles 425 and 55.

No. 425-1878 \$167.00 ea.

No. 55-1878 163.50 ea.

*cincture sold separately

**Liturgical bandings are available only
on styles 55 and our very popular 425.**

Sizing Your Liturgical Orphrey Alb

Size	Back Length	Chest/ Waist	Sleeve Length	Fit Height
X-Small	54"	30"-38"	31"	5'3"-5'5"
Small	56"	32"-40"	32"	5'6"-5'8"
Medium	58"	34"-44"	33"	5'9"-5'11"
Large	60"	36"-48"	34"	6'0"-6'3"
X-Large	62"	36"-48"	35"	Over 6'3"

All Garments with Banding are Made to Order
Non-Returnable/Non-Refundable



Skull Caps

Style 21

\$25.00 ea.

Size: Small, Medium, Large –
specify when ordering

Available in red, black, white
and purple. Specify color when
ordering.



Permanent Press Albs



Style 450

Classic Alb Style 450 – Easy care 100% Polyester.
Elastic waist in back and adjustable velcro front. **\$113.00 ea.**

Clergy Fitted Alb Style 425 – 65% Polyester/ 35% Cotton.
Standup collar with 30" zipper and adjustable velcro belt. **\$102.00 ea.**

Traditional Alb Style 55 – 65% Polyester/ 35% Cotton.
Full cut. **\$82.00 ea.**

Style 425 & 450 Sizing Chart

Size	Back Lgt.	Chest/Waist	Sleeve Lgt.	Fit Hgt.
X-Small	54"	30"-38"	31"	5'3"-5'5"
Small	56"	32"-40"	32"	5'6"-5'8"
Medium	58"	34"-44"	33"	5'9"-5'11"
Large	60"	36"-48"	34"	6'0"-6'3"
X-Large	62"	36"-48"	35"	Over 6'3"

Style 55 Sizing Chart

Size	Back Lgt.	Chest/Waist	Sleeve Lgt.	Neck
X-Small	54"	56"-64"	31"	17"
Small	56"	58"-66"	32"	18"
Medium	58"	60"-68"	33"	19"
Large	60"	62"-70"	34"	20"
X-Large	62"	62"-70"	35"	21"



Style 425



Back Detail 425



Style 55

Priest Surplices



Style 335

Liturgical Surplice

Style 335 Knee Length, Round Yoke, Permanent Press Surplice. 65% Polyester/35% Cotton. Sizes: small (38") medium (40") large (42") x-large (44")

\$72.00 ea.



Style 363

Ecumenical Surplice

Knee length, square yoke with long sleeves. Sizes: small (35") medium (37") large (39") See size chart page 10.

Style 360

Polyester/cotton

\$87.00 ea.

Style 363

100% White Polyester

\$92.00 ea.

Style 336



Liturgical Surplice

Style 336 Knee Length, Square Yoke, Permanent Press Surplice. 65% Polyester/35% Cotton. Sizes: small (38") medium (40") large (42") x-large (44")

\$72.00 ea.



Surplices

Sizes: small (30") medium (32") large (34") x-large (36")

Style 333

65% Polyester/35% Cotton.

Permanent press, with square yoke.

\$60.00 ea.

Style 334

Same as 333 with round yoke. **\$60.00 ea.**



Banded Surplices and Mass Linens

Banded Surplices

Style 113B Square Yoke Style 115B Round Yoke

65% polyester/35% cotton.
Cross design orphrey in
purple, gold, red and black.
Specify color and style.

Sizes 8 or 10	\$83.00 ea.
Sizes 12 or 14	\$85.00 ea.
Sizes 16, 18 or 20	\$87.00 ea.

Style 110B Round Yoke Style 110SB Square Yoke

65% polyester/35% cotton.
Cross design orphrey in
purple, gold, red and black.
Specify color and style.

Sizes 8 or 10	\$95.00 ea.
Sizes 12 or 14	\$97.00 ea.
Sizes 16, 18 or 20	\$98.00 ea.



Banding Colors

All Garments with Banding are Made to Order
Non-Returnable/ Non-Refundable.
Allow 2 weeks to produce and ship.



**Style
113B**



**Style
110B**

Small Mass & Communion Linens

Embroidered cross available on Amice, Corporal, Purificator & Pall in red or white. Can be order without cross. Packaged 3 in a reusable poly bag. Individually priced.

No. 71 L	Amice (17"x35")	\$19.50 ea.
No. 73 L	Corporal (17"x17")	12.50 ea.
No. 74 L	Large Corporal (21"x21")	19.00 ea.
No. 75 L	Purificator (12"x18")	11.00 ea.
No. 77 L	Pall w/insert (6 1/2"x6 1/2")	12.50 ea.
No. 79 L	Lavabo Towel (10"x14")	9.00 ea.

No. 71 K	Amice (17"x35")	\$13.00 ea.
No. 73 K	Corporal (17"x17")	10.50 ea.
No. 74 K	Large Corporal (21"x21")	13.00 ea.
No. 75 K	Purificator (12"x18")	9.50 ea.
No. 77 K	Pall w/insert (6 1/2"x6 1/2")	10.50 ea.
No. 79 K	Lavabo Towel (10"x14")	7.50 ea.

L- 55% Linen/45% Cotton K- 65% Polyester/35% Cotton



Square Yoke and Round Yoke Surplices



**Style
115**



**Style
110**



**Style
113**

Surplices

Round Yoke Styles

Style 115

65% polyester/35% cotton.

Size 8 – 16"

Size 10 – 18" **\$33.00 ea.**

Size 12 – 20"

Size 14 – 22" **\$37.00 ea.**

Size 16 – 24"

Size 18 – 26"

Size 20 – 28" **\$38.00 ea.**

Liturgical Surplice

Style 110 – Round Yoke

Extra full cut – 6 inches longer than a standard surplice.

Sizes 8 – 22" 10 – 24" **\$45.00 ea.**

Sizes 12 – 26" 14 – 28" **\$47.00 ea.**

Sizes 16 – 30" 18 – 32"

20 – 34" **\$48.00 ea.**

Square Yoke Styles

Style 113

65% polyester/35% cotton.

Size 8 – 16"

Size 10 – 18" **\$33.00 ea.**

Size 12 – 20"

Size 14 – 22" **\$37.00 ea.**

Size 16 – 24"

Size 18 – 26"

Size 20 – 28" **\$40.00 ea.**

Liturgical Surplice

Style 110S – Square Yoke

Extra full cut – 6 inches longer than a standard surplice.

Sizes 8 – 22" 10 – 24" **\$45.00 ea.**

Sizes 12 – 26" 14 – 28" **\$47.00 ea.**

Sizes 16 – 30" 18 – 32"

20 – 34" **\$48.00 ea.**



Surplices are available with Banding see page 8 for style and pricing.

Sizing Charts

Front Wrap Albs

Size	Back Length	Chest/Waist	Sleeve Length	Neck	Fit Height
XS	54"	30"-40"	31"	18"	5'3"-5'5"
S	56"	32"-44"	32"	18"	5'6"-5'8"
M	58"	34"-48"	33"	20"	5'9"-5'11"
H-M	58"	38"-52"	33"	20"	5'9"-5'11"
L	60"	36"-52"	34"	21"	6'0"-6'3"
H-L	60"	40"-60"	34"	20 1/2"	6'0"-6'3"
XL	62"	36"-52"	35"	21"	Over 6'3"

Style 215

Size	Back Length	Chest	Waist	Sleeve Length	Neck
7	38"	28"	26"	23 1/2"	13"
8	40"	30"	28"	24 1/2"	13 1/2"
9	42"	30"	28"	25 1/2"	13 1/2"
10	44"	32"	30"	26 1/2"	14"
11	46"	32"	30"	27 1/2"	14"
12	48"	34"	32"	28 1/2"	14 1/2"
13	50"	34"	32"	29 1/2"	14 1/2"
14	52"	36"	34"	30 1/2"	15"
15	54"	36"	34"	31 1/2"	15"
16	56"	38"	36"	32 1/2"	15 1/2"
17	58"	38"	36"	33 1/2"	15 1/2"
18	60"	40"	38"	34 1/2"	16"
19	62"	42"	40"	35 1/2"	16 1/2"
20	64"	42"	40"	36 1/2"	16 1/2"

Style 216

Size	Back Length	Chest	Waist	Sleeve Length	Neck
16X	55"	44"	42"	31"	16"
17X	58"	44"	42"	33"	17"
18X	60"	46"	44"	34"	18"
19X	62"	48"	46"	35"	19"
20X	64"	50"	48"	36"	20"

Style 217

Size	Back Length	Chest	Waist	Sleeve Length	Neck
17X	58"	54"	52"	33"	19"
18X	60"	56"	54"	34"	20"
19X	62"	58"	56"	35"	21"
20X	64"	60"	58"	36"	22"

Style 335 & 336

Size	Back Length	Chest	Sleeve Length
S	38"	52"	31"
M	40"	54"	32"
L	42"	56"	33"
XL	44"	58"	34"

Style 333 & 334

Size	Back Length	Chest	Sleeve Length
S	30"	50"	Elbow
M	32"	54"	Elbow
L	34"	58"	Elbow
XL	36"	60"	Elbow

Style 225, 226

Size	Back Length	Chest	Waist	Sleeve Length	Neck
7	38"	30"	36"	23"	15"
8	40"	30"	36"	24"	15"
9	42"	32"	38"	25"	15 1/2"
10	44"	32"	38"	26"	15 1/2"
11	46"	34"	40"	27"	16"
12	48"	34"	40"	28"	16"
13	50"	36"	42"	30"	16 1/2"
14	52"	36"	42"	30"	16 1/2"
15	54"	38"	44"	31"	17"
16	56"	38"	44"	32"	17 1/2"
17	58"	40"	46"	33"	18"
18	60"	40"	46"	34"	18 1/2"
19	62"	42"	48"	35"	19"
20	64"	42"	48"	36"	20"

Style 205, 206, 207, 208, 210, 211

Size	Back Length	Chest	Waist	Sleeve Length	Neck
7	38"	30"	31"	22 1/2"	15"
8	40"	30"	31"	23 1/2"	15"
9	42"	32"	33"	24 1/2"	15 1/2"
10	44"	32"	33"	25 1/2"	15 1/2"
11	46"	34"	35"	26 1/2"	16"
12	48"	34"	35"	27 1/2"	16"
13	50"	36"	37"	28 1/2"	16 1/2"
14	52"	36"	37"	29 1/2"	16 1/2"
15	54"	38"	39"	30 1/2"	17"
16	56"	38"	39"	31 1/2"	17 1/2"
17	58"	40"	41"	32 1/2"	18 1/2"
18	60"	40"	41"	33 1/2"	18 1/2"
19	62"	42"	43"	34 1/2"	19"
20	64"	42"	43"	35 1/2"	20"

Style 113 & 115

Size	Length	Chest	Size	Length	Chest
8	16"	30"	16	24"	38"
10	18"	32"	18	26"	40"
12	20"	34"	20	28"	42"
14	22"	36"			

Style 360 & 363

Size	Back Length	Chest	Sleeve Length
S	35"	50"	29"
M	37"	54"	31"
L	39"	58"	33"



Family of Brands

EMKAY • EMITTE • ABBEY



Permanent Press Albs ♦ Front Wrap Albs ♦ Altar Server Albs
Liturgical Orphreys ♦ Cincture ♦ Roman Cassocks and Surplices
Priest's Surplices ♦ Skull Caps ♦ Small Mass & Communion Linens



Copyright 2021, Abbey Brand Inc. Prices subject to change without notice.